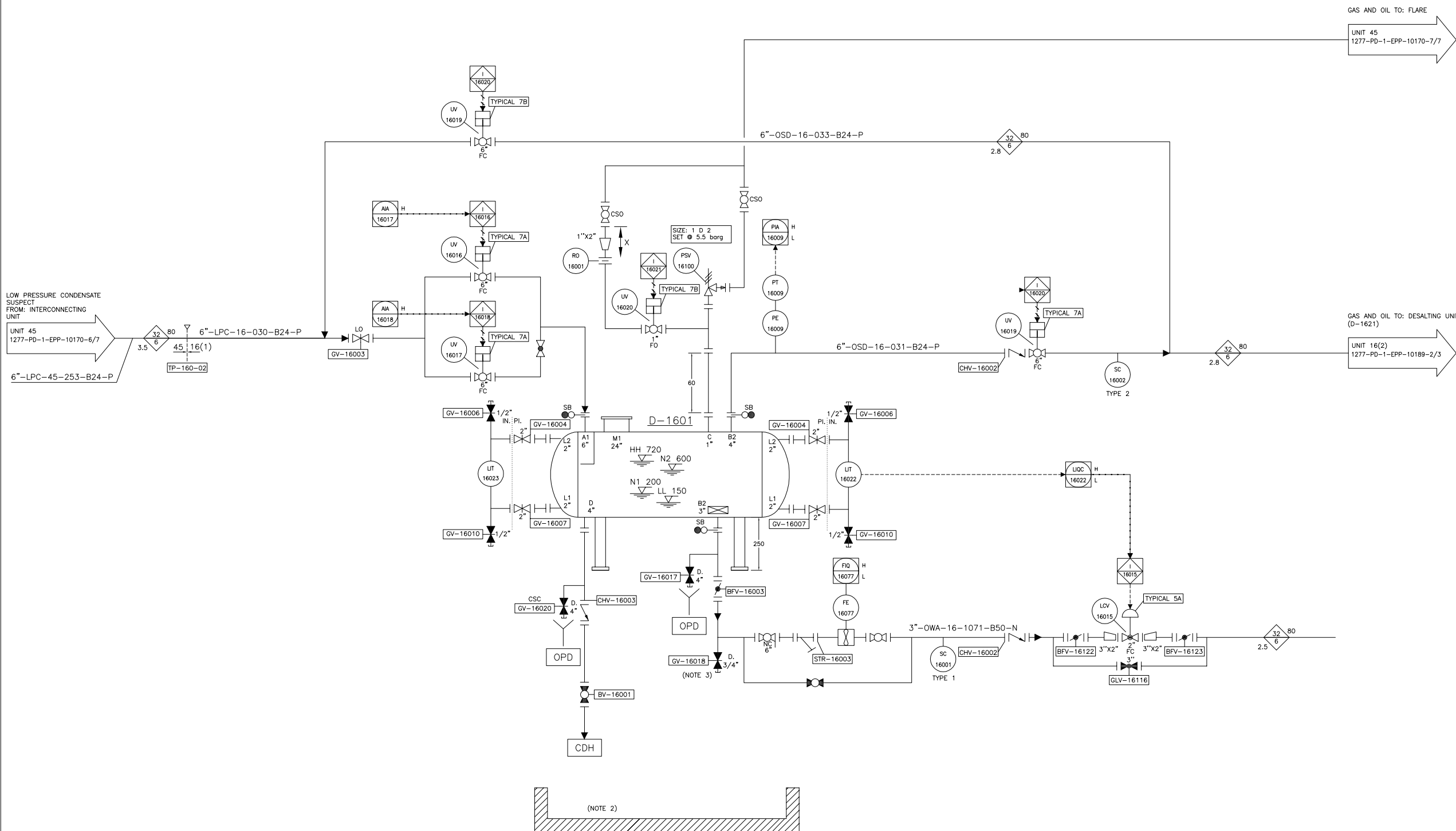


D-1601	
KNOCK OUT DRUM	
QUANTITY	1(1+0)
DIMENSIONS (ID X SH) mm	1000 X 2700
TYPE	VERTICAL CYLINDRICAL
NOMINAL CAPACITY m <sup>3</sup>	1.654
DESIGN TEMP.(°C)/PRES.(barg)	115/6
CORROSION ALLOWANCE (SHELL/HEAD) mm	3/3
COATING INTERNAL/EXTERNAL	-/EPOXY
MATERIAL	A 285
INSULATION	PERSONNEL PROTECTION



REFERENCE DRAWINGS

NO.	DRAWING NUMBER	DRAWING TITLE
1	1277-PD-1-EPP-10000	P&ID LEGEND

NOTES:

- 1- DELETED
- 2- THE CURBED AREA SHALL BE CONSIDERED AROUND THE PUMP AND ALL DRAIN ARE ROUTED TO OILY WATER DARIN NETWORK.
- 3- ALL DRAIN ARE ROUTED TO OPEN DARIN NETWORK UNLESS OTHERWISE STATED.
- 4- 60cm SPOOL FOR ISOLATION BEFORE PRESSURE SAFETY VALVE

C1									
BB									
B7									
B6									
B5									
B4									
B3									
B2									
B1	12,MAR,13	M.A	M.P	M.A					IFA
A1	2,JAN,13	M.A	M.P	M.A					FOR REVIEW
REV.	DATE	DESIGN	DRAW	CHECK	APPROVE	M.C.	DESCRIPTION		

CLIENT:

PROJECT: OIL REFINERY

MC: CONTRACTOR:

DRAWING TITLE: SECOND STAGE PURIFICATION PACKAGE (016) P&ID (KNOCK OUT DRUM SECTION)

SIZE:	REV.	DRAWING NUMBER					
A1	C1	CODE No.	TYPE	SIZE	GROUP	CODE No.	
8 OF 23	N/A	0124	PD	1	EPP	10108	